

# QINGDAO BESTYEAR HARDWARE & MACHINERY CO.,LTD

ADD:22# YAN ER DAO ROAD,QINGDAO,CHINA

MANAGER: Mr.CHELI

E-mail: cheli@qdvalves.com cheli@bestyearboats.com Tel:+86 532 85759809 Fax: +86 532 85786310

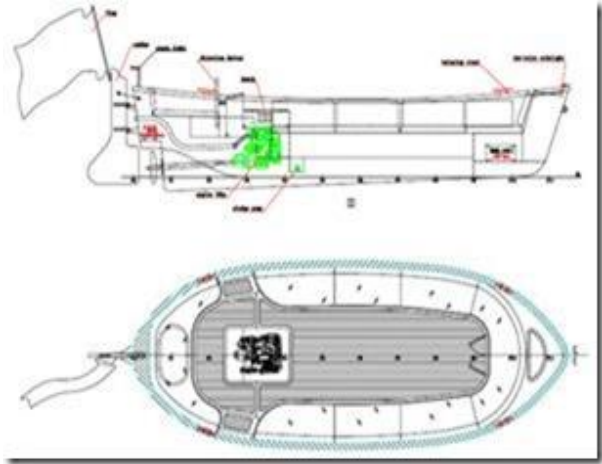
[www.bestyearboats.com](http://www.bestyearboats.com)

[www.boatbestyear.com](http://www.boatbestyear.com)

## 575 sloepen boat



Main technical parameters:	12,500)	
Length:	5.75m	
Beam:	2.3m	
Depth:	0.95m	
Passenger:	8	
Speed:	12 km/h	
Recommend engine type:	inboard engine	
Weight:	600kg( light loading)	
 	TDME-380 diesel engine 27HP (China)	
	s/s rudder and brone propeller	
	hydraulic system	
	316 s/s wheel	
	50L diesel fuel tank	
	LED side light	
	70Ah/12V marine battery	
	auto bilge pump	
	s/s rails,cheat,chain,hinge	
	s/s screw; s/s screw nut	
	optional:	cushion USD960
	with electric motor 5KW+30pcs 2V battery USD22580/boa	





one boat in a 20'container  
4 boats fit in a 40h container